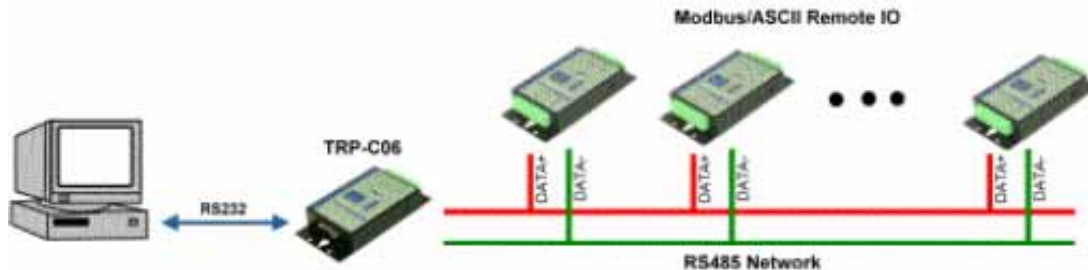
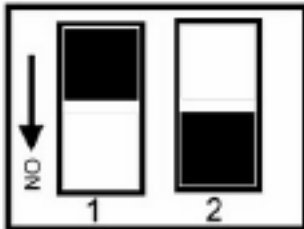


AIO/DIO RS485 Remote I/O Quick Install

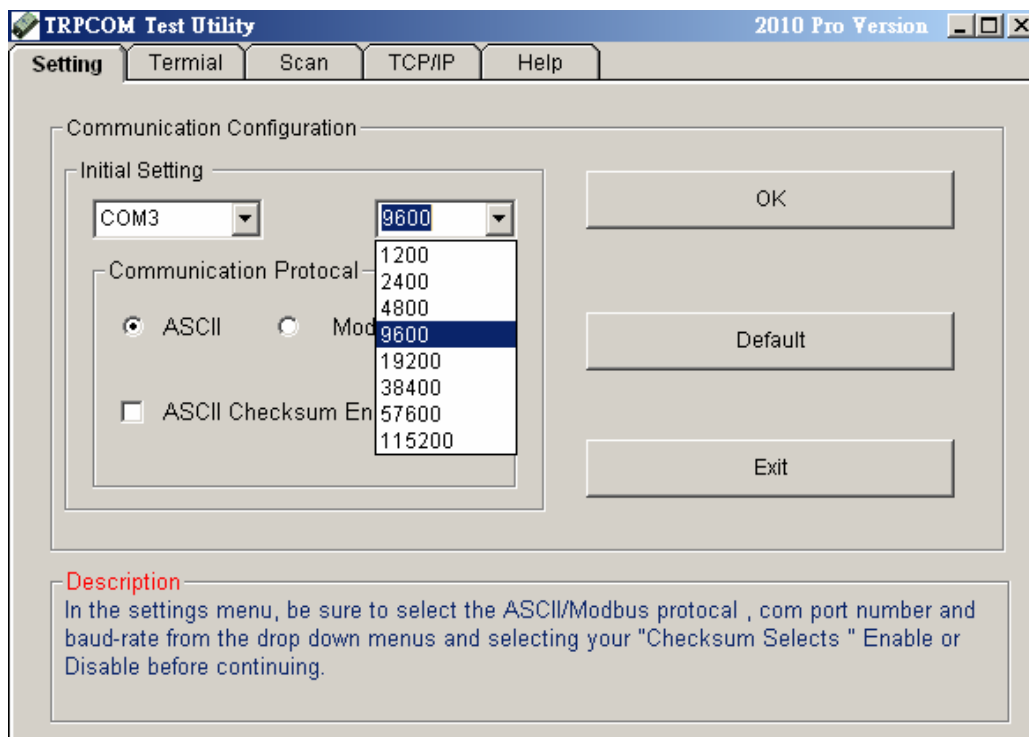
1. Plug in the power or connect power to screw terminal DC 10~30V .
2. Connect the DIO or AIO module to RS485 line



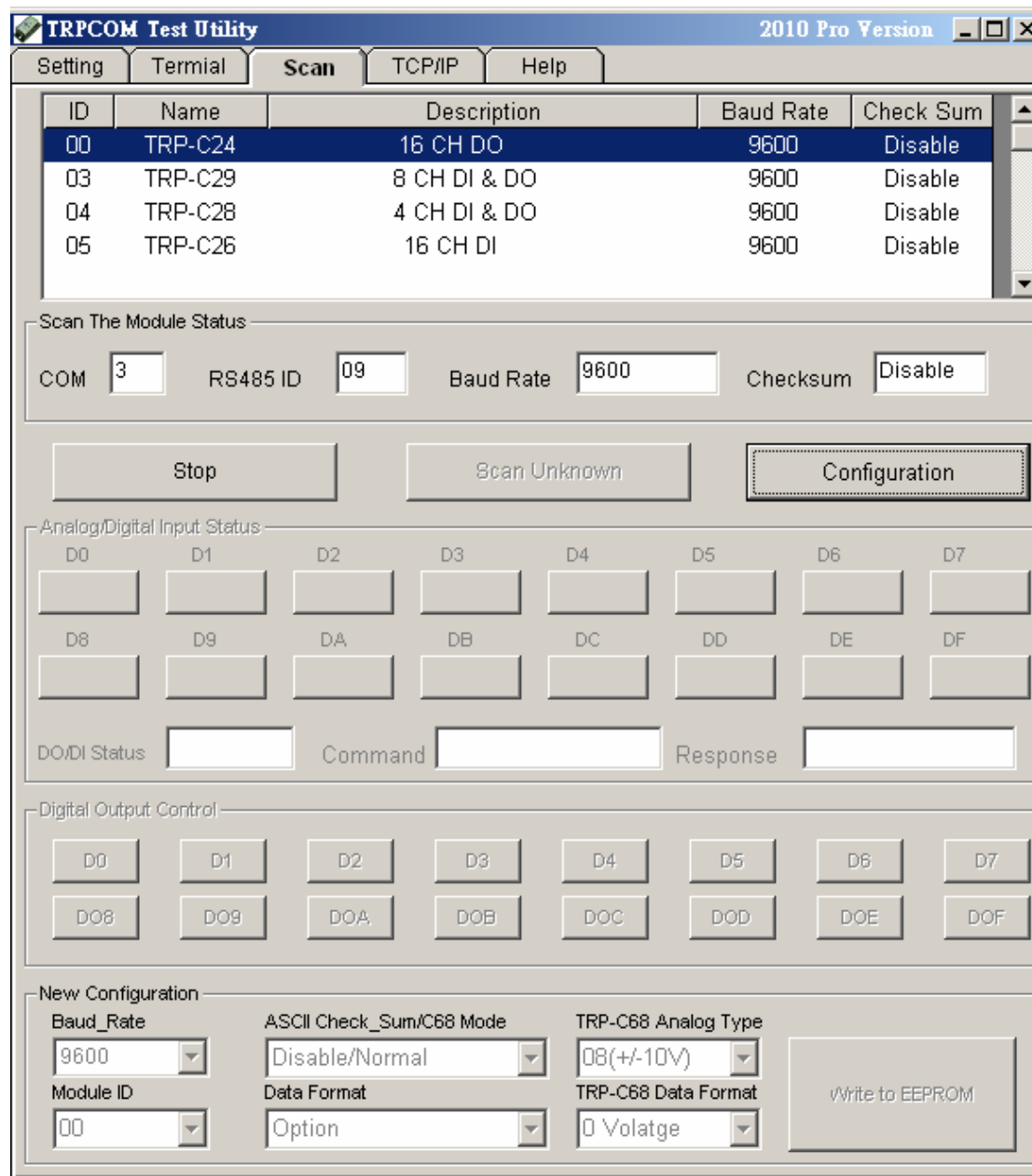
3. Adjust the module's switch to "OFF,ON"



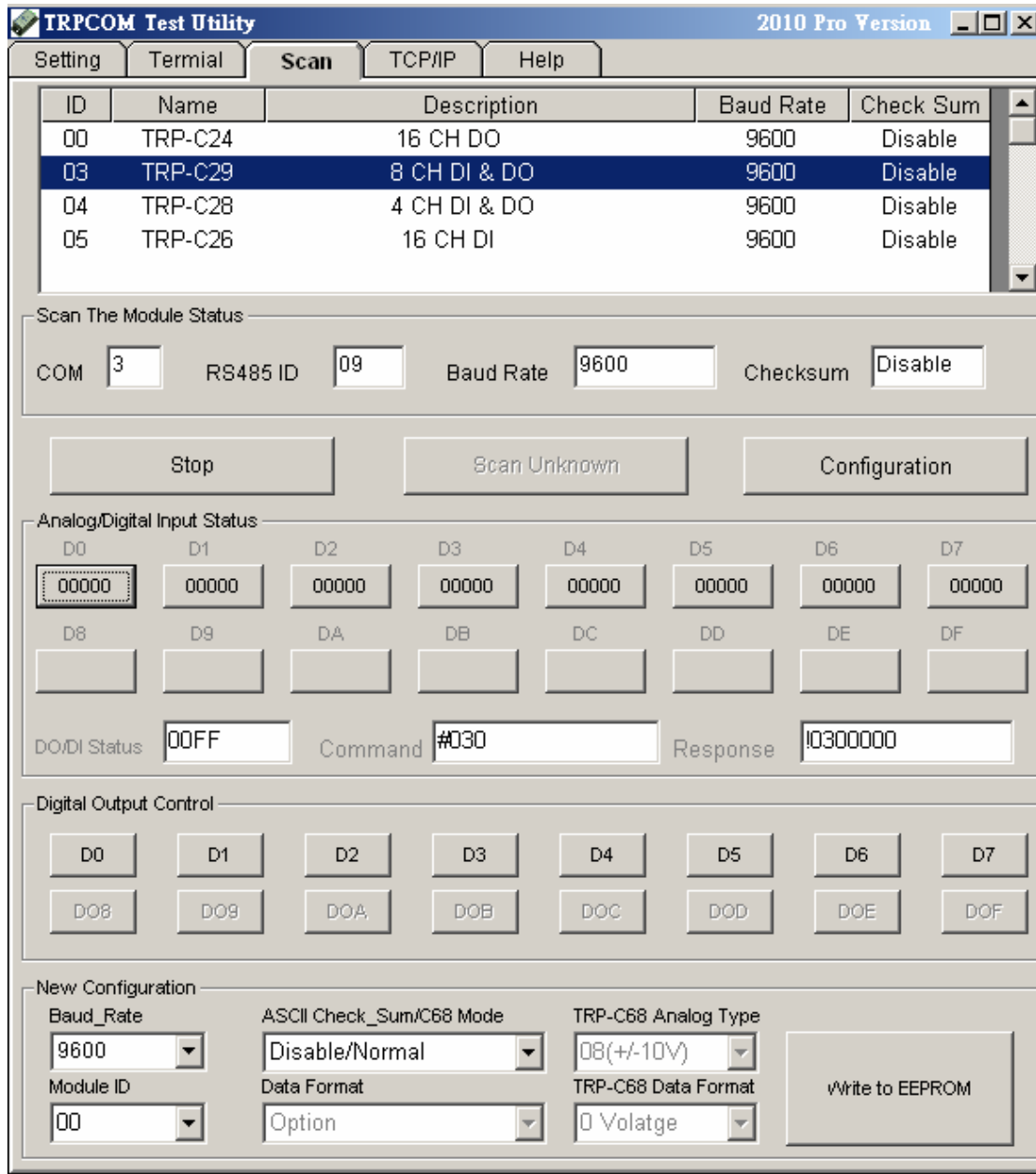
4. Run TRPCOM Utility and select correct setting then click "OK".
***Default ID=01, Date Format=9600,8,N,1, Check Sum=Disable, Data Format=00**



- Select "Scan" item then click "SCAN" button that will find the on line module.



- Select the module which one you want setting then click "Configuration".
Example: TRP-C29 Configuration
- Get Counter Value please click Digital Input "D0~D7" button.
 - Enable the digital output click Digital Output "D0~D7"button.
 - Set up new RS485 ID, Baud-Rate and data format then click "Write to EEPROM" button.



*If you click "Scan" button, you can't find the module, please turn off the power then adjust switch to "ON OFF" ->Power ON->adjust switch to "ON ON" ,that will back to Initial mode.

Initial Mode: ID=00,BD=9600,Data Format=00 .